

GRAND NATIONAL AINTREE RACECOURSE

HANDLING AND REQUIRED CONDUCT OF PILOTS

12th, 13th, 14th, APRIL 2012

AINTREE GRAND NATIONAL

1.1 Introduction

This document details the handling and required conduct of pilots at Aintree Racecourse for the period of the Grand National, Thursday 12th April until Saturday 14th April 2012

1.2 Contact Details

All enquires reference this document should be made with,
Rotary Wing Ltd
109 Gilda Rd
Worsley
Manchester
M28 1BP
TEL: 0161 799 6967
FAX: 0161 799 6967
MOB: 07923 621371
EMAIL: ops@rotarywing.co.uk

1.3 Facilities

Facilities for the acceptance and handling of Helicopters at Aintree Racecourse will be provided throughout the period by Rotary Wing Ltd.

1.4 Permissions

The site is unlicensed and Rotary Wing Ltd will obtain the appropriate Permissions from the C.A.A. **The conditions on the attached Permission are MANDATORY.**

In particular please note:

The alleviation from Rule 5(3)(c) – not flying below 1000ft above the highest fixed obstacle within 600 metres of the helicopter – only applies within 1 km of Aintree Racecourse.

The requirements in UK AIP GEN 1 – 6 – 8 , Landing and Taking Off Near Open Air Assemblies, attached with the CAA Permission, are to be met in full.

1.5 Acceptance

Acceptance is STRICTLY prior permission required. Written permission, call sign and slot times will be issued upon receipt of fully completed forms which can be found at the end of this document. To request permission contact/forward the completed documentation to Karen Pickford,

TEL: 0161 799 6967
MOB: 07923 621371
EMAIL: ops@rotarywing.co.uk

1.6 Security

A blank General Aviation Report is available to down-load

One report must be completed for each aircraft movement and returned to,

Email: Special.branch.Liverpool.airport@merseyside.police.uk

Fax: 0151 777 2377

Failure to submit a General Aviation Report may result in your passengers being detained until their identification can be confirmed.

1.7 PASSENGER TICKETS

All passengers must be in possession of a valid racecourse entry ticket. If your passengers do not have a ticket they will be escorted to the nearest exit.

Owners and Trainers tickets will be made available at the helipad provided you have supplied all the information required on the booking form.

It is your responsibility to ensure your clients have tickets.

CONDUCT OF PILOTS

2.1 Operational Hours

2.1.1 The landing site will be available on Thursday 12th April and Friday 13th April between the hours of 0830 and 1900. All aerial activity must cease 10 minutes prior to the race, until 10 minutes after the race has finished. Sunrise and sunset for the period are as follows
8th 06.43hrs 19.49hrs 9th 06.40hrs 19.51hrs 10th 0638hrs 19.52hrs

2.1.2 The landing site will be available on Saturday 14th April between the hours of 0830 and 1900. All aircraft must have arrived and shut down by 1315. Aircraft will only be allowed to depart after the Grand National has completed. Aircraft shall not start its engines until a broadcast has been made by Aintree Radio that it is safe to do so, this will only be made when all horses have left the course. Departure times therefore can not be guaranteed.
The minimum cloud base and visibility for Heliport operations are as follows 600 FT CLOUD BASE 3KM VISIBILITY

IF THE ORGANISER DECLARES THE WEATHER BELOW LIMITS THEN NO ARRIVALS OR DEPARTURES ARE ALLOWED UNTIL THE WEATHER IMPROVES TO ABOVE LIMITS.

2.2 Helicopter Landing Area

The landing area is on the golf course to the east of the Racecourse, it is situated on the 9th Fairway. Caution should be exercised as there are Two (2) high camera towers up to 50ft in the vicinity, Located at Grid references SJ 375 979 SJ 384 980 OS Sheet No. 108

2.3 Airspace

2.3.1 Aintree Racecourse is situated in Class G airspace and has no ATZ. To help in the safe and orderly flow of air traffic, approach routings have been detailed graphically later in this document.

2.3.2 Caution should be exercised when operating into Aintree due to the proximity of Manchester's and Liverpool's controlled airspace, and also Her Majesty's Prison at Walton. Located at Grid reference SJ 357 962 OS Sheet No. 108.

2.4 Landing Area Contact Details

2.4.1 The landing site will be operating an Air/Ground service, call sign Aintree Radio and frequency 132.900 MHz. Only call Aintree when you are less than 5 miles out

2.4.2 Due to difficulties with communications at the heliport we ask that all contact in relation to aircraft changes, delays, etc are made via text message to the following number:
MOB: 07923 621371

2.5 Inbound Procedures

- 2.5.1 Aircraft shall approach the Racecourse from the East to avoid over flying the main area of the Racecourse following the recommended arrival routing. Aircraft shall use their assigned call signs when contacting Aintree Radio. On approaching the area contact shall be made with Aintree to check the landing strip is open, no racing is in progress and ascertain the direction of landing. Runway 09 or 27 After making an approach and landing at the HAP follow the marshalls instructions to a parking position. When on the parking position with rotors running a constant listening watch must be maintained on Aintree's frequency in case the aircraft is required to shut down due to a race commencing.
- 2.5.2 Aircraft requiring fuel shall park and shut down on the parking position and fuel will be taken to the aircraft.

2.6 Outbound Procedures

- 2.6.1 Before starting a call must be made to Aintree Radio for clearance and to obtain the departure direction. Runway 09 or 27
- 2.6.2 When ready to depart, lift into the hover and point the nose of the helicopter towards the runway strip. And call ' c/s is Ready for Departure '

MAPS – ROUTINGS

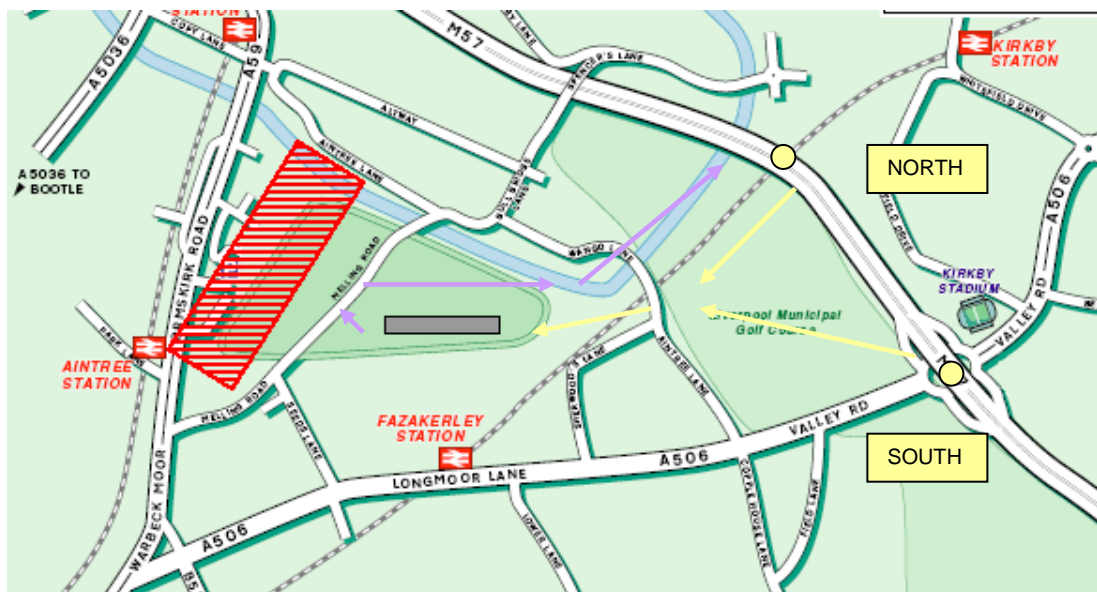
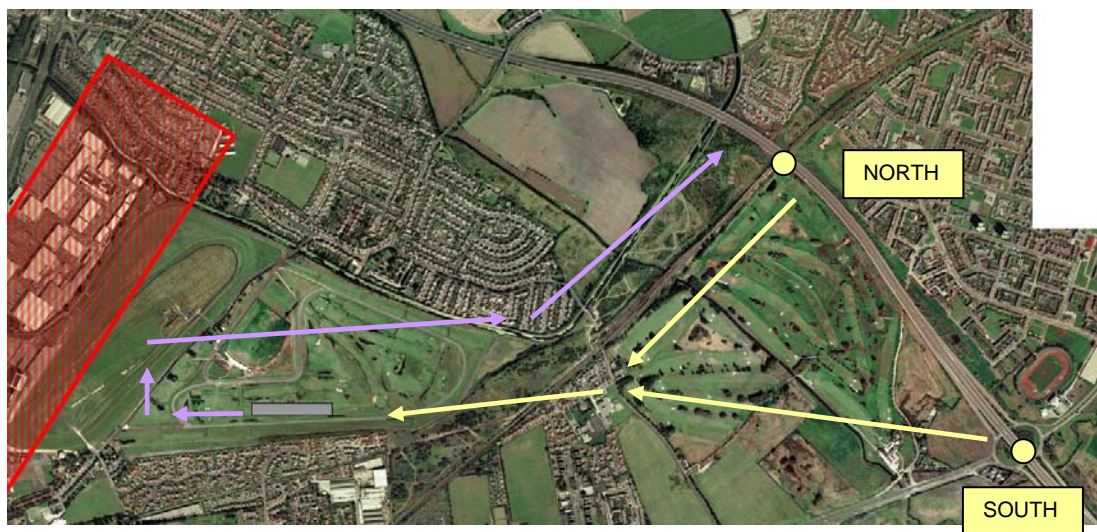
3.1 Introduction

These diagrams show required routes into Aintree Racecourse during the Grand National. There are two unofficial visual reference points.

- South - M57 Junction 6
- North - M57 and railway intersection north of the golf course

Routing is using the railway line as a division between the arriving and departing traffic. Notice should be made of the hashed red area (The Grandstands) which are not to be overflowed.

3.2 Routings Westbound Operations – Runway 27



GEN 1.6 — SUMMARY OF NATIONAL REGULATIONS AND INTERNATIONAL AGREEMENTS/CONVENTIONS

1 Landing and Taking Off Near Open Air Assemblies

1.1 When an event involving an organised open-air assembly of more than 1000 people takes place within 1000 metres of an unlicensed aerodrome or helicopter landing site, compliance with the following procedures is required under Rule 5(2)(f) of the United Kingdom Rules of the Air 1996 (as amended):

1.2 Procedures applicable at a pre-existing unlicensed aerodrome:

- (a) Landing and take-off shall only be performed with the permission of the person in charge of the aerodrome.
- (b) Aircraft shall not fly over any area occupied by spectators or car parks below a height of 1000 ft agl or such height as will permit the aircraft, in the event of a power unit failure, to alight clear of the assembly, whichever is the higher.
- (c) The person in charge of the aerodrome shall ensure that on the ground, aircraft and members of the public are segregated from each other.

1.3 Procedures applicable at a temporary helicopter landing site:

- (a) The helicopter commander or operator shall obtain the written permission of the person in charge of the event prior to using the landing site.
- (b) The person in charge of the event should convey to helicopter commanders written details pertaining to the location and layout of the landing site and the procedures to be employed.
- (c) The person in charge of the event should inform the local police authority a minimum of 24 hours in advance of the commencement of operations.
- (d) The person in charge of the event shall ensure that on the ground, aircraft and members of the public are segregated from each other.
- (e) Landing and take-off shall only be performed:
 - (i) During daylight hours.
 - (ii) When the cloud ceiling is higher than 600 ft agl and the flight visibility is more than 3 km.
- (f) Helicopters shall not fly over any area occupied by spectators or car parks below a height of 1000 ft agl or such height as will permit the helicopter, in the event of a power unit failure, to alight clear of the assembly, whichever is the higher.
- (g) Landing and take-off shall be made in an area which has been set aside for the purpose and helicopters which are landing and taking-off shall maintain a safe distance from persons located outside the area, of at least 30 metres.
- (h) Approach and departure shall be made over clear areas so that a safe forced landing can be achieved in the event of engine failure.

1.4 Procedures applicable to aeroplane operations at a temporary aerodrome:

- (a) Operations should be conducted in accordance with the guidance contained in CAP 428.
- (b) The aircraft commander or operator shall obtain the written permission of the person in charge of the event prior to using the aerodrome.
- (c) The person in charge of the event should convey to aircraft commanders written details pertaining to the location and layout of the aerodrome and the procedures to be employed.
- (d) Aircraft shall not fly over any area occupied by spectators or car parks below a height of 1000 ft agl or such height as will permit the aircraft, in the event of a power unit failure, to alight clear of the assembly, whichever is the higher.

1.5 CAP 428 (available at www.caa.co.uk) contains guidance on safety standards at unlicensed aerodromes. Further advice concerning operations at unlicensed aerodromes, heliports or landing sites may be obtained from the General Aviation Department (for non-public transport operations) or Flight Operations Department (for public transport operations) of the Civil Aviation Authority, Tel: 01293-567171.

LANDING REQUEST FORM – AINTREE 2012

Name			
Postal Address		Email Address (For Further Correspondence)	
		Telephone Number	
Date of Arrival	ETA	Date of Departure	ETD
Aircraft Registration		Aircraft Type	
Pilots Name		Jet A1 – If required amount in Litres	
Passenger Names		Passenger Names - Contd	
<p><u>ALL PASSENGERS MUST BE IN POSSESSION OF A VALID ENTRY TICKET, See 1.7</u></p>			
INFORMATION BELOW IS REQUIRED BY THE EVENT ORGANISER			
Are any of your passengers racehorse owners?		If yes give details of the horse	
YES / NO			
Any other information relevant to passengers, i.e. VIP Status, Disabilities, Special Requests, Racehorse Trainers, etc			
<p>NOTE - One completed form must be submitted for every aircraft movement.</p> <p>FOR LANDING FEES PLEASE CONTACT ROTARY WING LTD</p> <p>0161 799 6967</p> <p>ON COMPLETION E-MAIL TO ops@rotarywing.co.uk</p>			

INDEMNITY FORM – AINTREE 2012

Details

In consideration of being granted permission to use the Ground Services and facilities provided at Aintree Racecourse during the period 12th,13th,14th, April 2012 (dates inclusive).

We agree to indemnify:

- A: Aintree Racecourse Company Ltd.
- B: Racecourse holdings trust Ltd.
- C: Rotary Wing Ltd.
- D: The employees, Servants or Agents of A,B,C, above.

In respect of any liabilities or indirect of any kind whatsoever which might attach to them arising out of the use of the facilities by our Aircraft.

We further confirm that we have in force Third Party Insurance for the limit of no less than Pounds Sterling 5,000,000.00 any one accident and such policy/ies have been endorsed to include the above named as additional assured subject to a one way cross liability clause.

We further confirm that a hold harmless and waiver of rights of subrogation has been endorsed on the Hull policy (if insured) in favor of the above named.

Signed:

Date:

Position in Company:

Operator:

On behalf of the Insurers

Signed:

Date:

Insurance Broker Company:

Policy Number/s:

Insurance Valid From:

Insurance Valid Until:

Note

This indemnity form is not valid unless countersigned by your insurance broker.

Please return completed form to

ROTARYWING LTD,
109 GILDA RD
WORSLEY
MANCHESTER
M28 1BP

ON COMPLETION E-MAIL TO ops@rotarywing.co.uk

ACCEPTANCE

I confirm that I have read and accept the conditions details within the document 'Grand National Aintree Racecourse, Handling and Required Conduct of Pilots, 12th, 13th, 14th, April 2012

Pilots Signature	Date
Print Name	
Aircraft Registration	Aircraft Type
Company Name	
Address	

Please return completed form to:-

Rotary Wing Ltd
109 Gilda Road
Worsley
Manchester M28 1BP

ON COMPLETION E-MAIL TO ops@rotarywing.co.uk

